



Nothing but **HEAVY DUTY.**



MX FUEL™ CARRY-ON™ 3600W/1800W POWER SUPPLY

SYSTEM WIDE

We are committed to protecting our users' investments by providing high performing, trade-focused solutions that are fully compatible with MX FUEL™ REDLITHIUM™ Batteries.



ALL MX FUEL™ BATTERIES FIT
ALL MX FUEL™ EQUIPMENT





MX FUEL™ CARRY-ON™ POWER SUPPLY

TOP-OFF™ vs. CARRY-ON™

Milwaukee® Portable Power Solutions

TOP-OFF™



- ✓ Personal Use
- ✓ Low Power Inverter for Small Devices
- ✓ Safe for Sensitive Electronics

CARRY-ON™



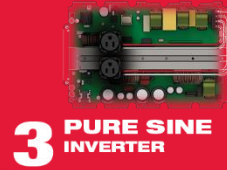
- ✓ Small Crew Support (1-2 Users)
- ✓ 15A Output to Run Corded Tools
- ✓ Safe for Sensitive Electronics

Portable Power Solutions for Every User's Power Needs

**PORTABLE
POWER
ANYWHERE**

**PORTABLE
POWER
ANYWHERE**

**MORE
EFFICIENT
POWER**



THE BEST TEMPORARY POWER FOR THE JOB



MX FUEL™ CARRY-ON™ POWER SUPPLY

Target Segment

Target Segment



Inverter Generators
(1,000W-3,000W)

Benefits

Ideal for 1-2 users
Built-in Inverter Is **Ideal For Sensitive Electronics**
Quieter Than Jobsite Generators
Lighter Weight

User Frustrations

Cannot Be Used Close To The User Due To **Noise**
Cannot Be Used Inside Due To **Emissions**
Wastes A Lot Of Gasoline While Idling



Jobsite Generators
(3,000W-10,000W)

- Dropping popularity as more tools go cordless
- Larger units more ideal for crews of 2-4
- Intended to run multiple 15-20A power tools at the same time



Power & Runtime Needs Increase

MX FUEL™ CARRY-ON™ Delivers Inverter Generator Power and Eliminates Common Nuisances on Jobsites



MX FUEL™ CARRY-ON™ POWER SUPPLY

User Frustrations with Generators & Temporary Power Sources

Generator User Frustrations



Due to the **excessive noise**, generators must be kept out of earshot, meaning a long walk for every adjustment



The **dangerous emissions** also mean generators cannot be used indoors or confined spaces

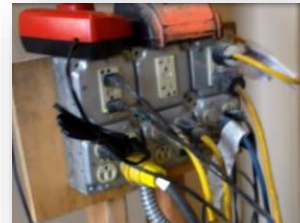


These distances lead to **100+ feet of extension cords**; causing trip hazards, lower power due to voltage drop, and a mess to untangle

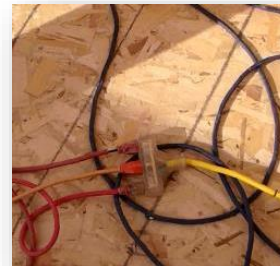
Temporary Power User Frustrations



Temp power like **Spider Boxes** are **rarely nearby**, meaning users run extension cords



With multiple users all relying on temp power for high demand tools, **breakers trip constantly** due to too much power being drawn



Managing the mess of extension cords in confined spaces takes a **frustrating amount of time** to prevent trips and falls

Generator & Temporary Power Sites Deal with Various Issues Related to Their Power Source



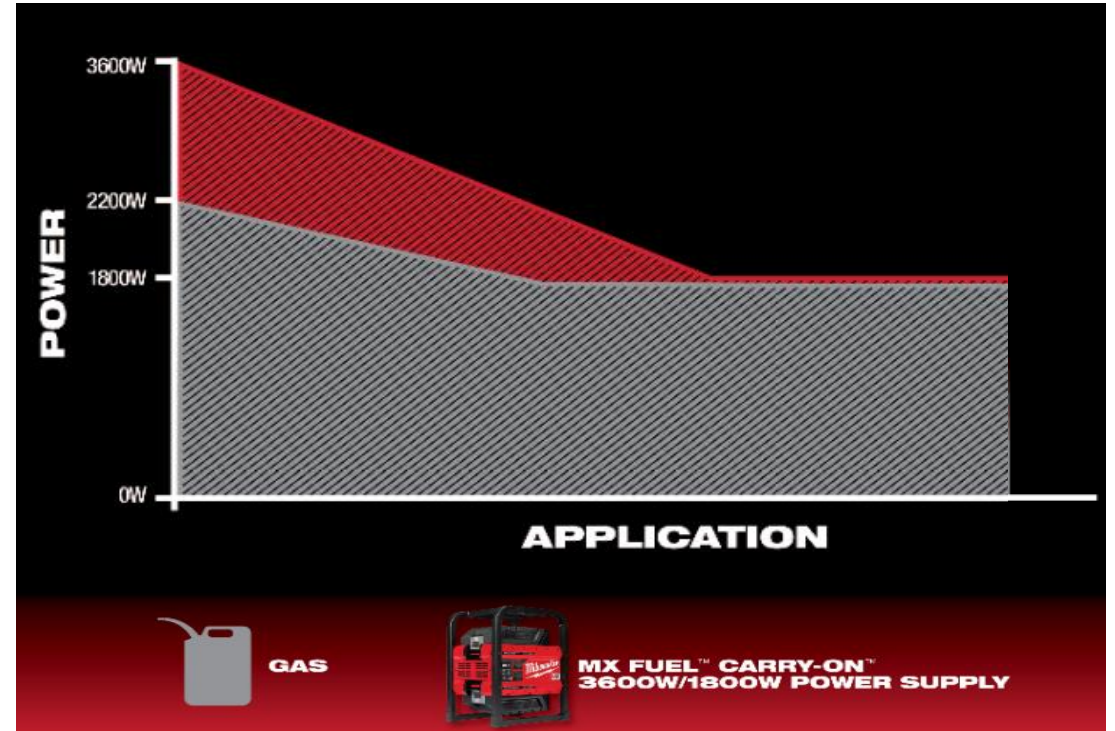
MX FUEL™ CARRY-ON™ POWER SUPPLY

Power More on Demand: Aggressive 15A Tools

POWER MORE ON DEMAND

PORTABLE POWER ANYWHERE

MORE EFFICIENT POWER



- Provides up to 3600W Peak Power
- Able to sustain higher power outputs for longer durations of time compared to gas competitors in aggressive applications
- Supports the startup of aggressive 15A tools
- Ideal power source for 1-2 users

MX FUEL™ CARRY-ON™ Powers Aggressive 15A Tools



MX FUEL™ CARRY-ON™ POWER SUPPLY

Wattage Guide

POWER MORE ON DEMAND

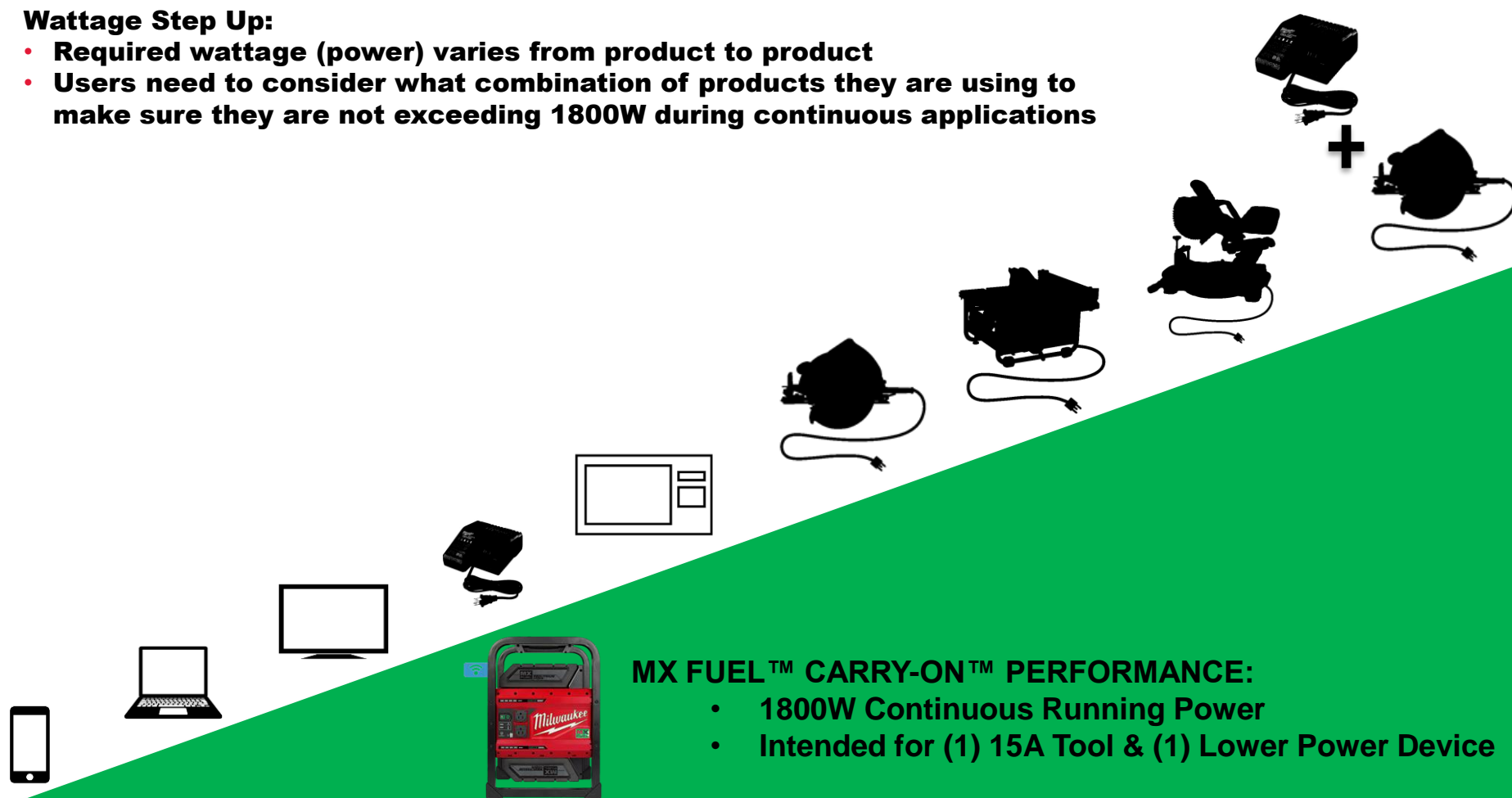
PORTABLE POWER ANYWHERE

MORE EFFICIENT POWER

Wattage Step Up:

- Required wattage (power) varies from product to product
- Users need to consider what combination of products they are using to make sure they are not exceeding 1800W during continuous applications

Increasing Wattage



MX FUEL™ CARRY-ON™ PERFORMANCE:

- 1800W Continuous Running Power
- Intended for (1) 15A Tool & (1) Lower Power Device

- Drawing more than 1800W for several seconds will cause unit to trip
- Common ways to trip unit:
 - Tools that draw above 1800W in heavy applications (Abrasive Chop Saw w/ steel stud)
 - Simultaneously Running Two 15A Power Tools

NOT RECOMMENDED

Confirm wattage before running products



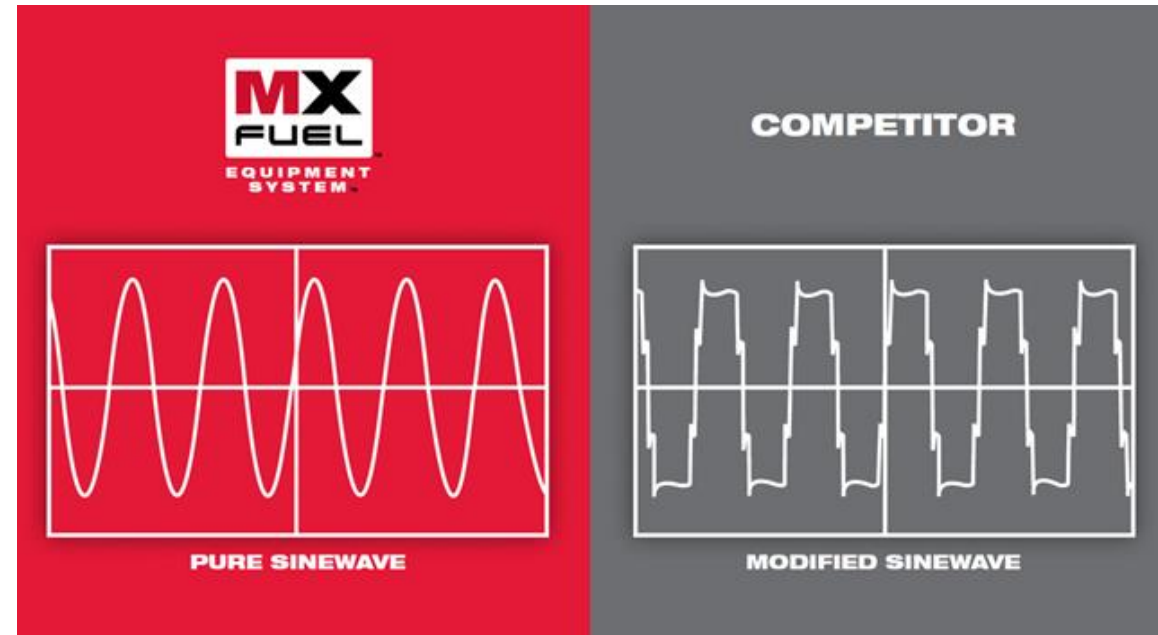
MX FUEL™ CARRY-ON™ POWER SUPPLY

Power More on Demand: Pure Sine Wave

POWER MORE ON DEMAND

PORTABLE POWER ANYWHERE

MORE EFFICIENT POWER



- **Pure sine wave inverters outputs clean energy**
- **Replicates the power from a wall outlet**
- **Able to start up, run and extend the life of sensitive electronics**

Pure Sine Wave Technology Provides Clean Energy to Sensitive Electronics



MX FUEL™ CARRY-ON™ POWER SUPPLY

Power More on Demand: Sensitive Electronics to Power Tools

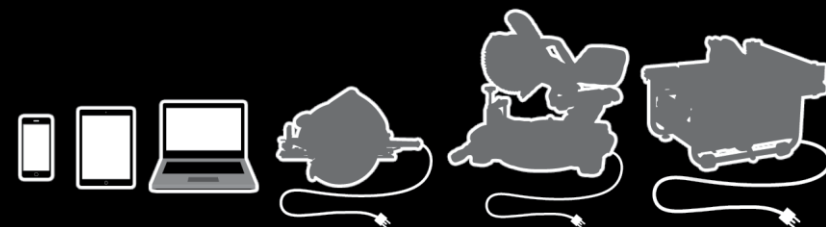
POWER MORE ON DEMAND

PORTABLE POWER ANYWHERE

MORE EFFICIENT POWER



**3600 PEAK WATTS
OF PURE SINE
INVERTER ENERGY**



LIGHT

DEMAND

HEAVY

- **Able to power everything from light to heavy duty applications**
- **Intended to be used with (1) 15A power tool & (1) lower power device**

MX FUEL™ CARRY-ON™ Powers a Range of Products from Sensitive Electronics to 15A Heavy Duty Power Tools



MX FUEL™ CARRY-ON™ POWER SUPPLY

Portable Power Anywhere

POWER MORE ON DEMAND

PORTABLE POWER ANYWHERE

MORE EFFICIENT POWER



- Emissions free for indoor & confined spaces
- Quiet Operation to keep power within reach
- No maintenance required

MX FUEL™ CARRY-ON™ Delivers a Gas-Free & Maintenance-Free Power Solution



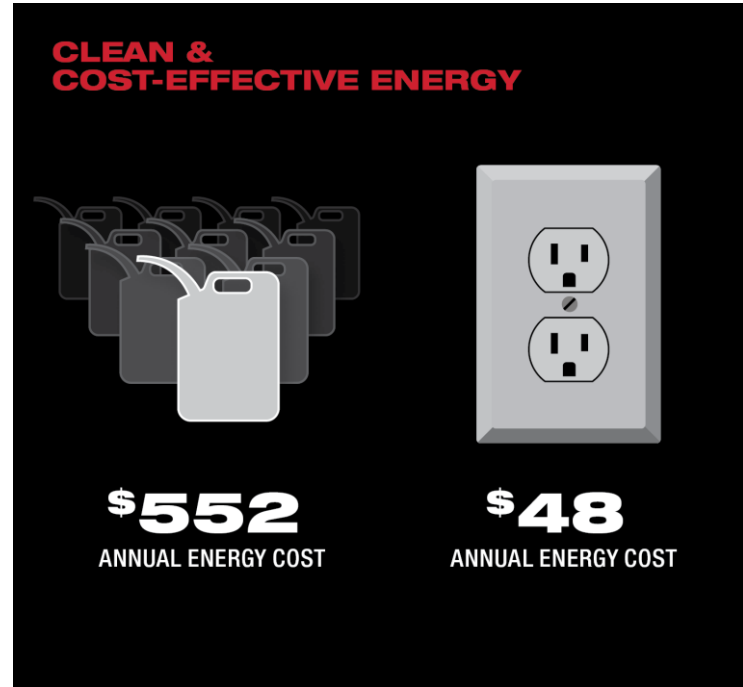
MX FUEL™ CARRY-ON™ POWER SUPPLY

More Efficient Power

POWER MORE ON DEMAND

PORTABLE POWER ANYWHERE

MORE EFFICIENT POWER



- **Eliminates cost of gasoline, oil, filters**
- **Save on wasted energy from idling engines**
- **Cost to recharge batteries is significant less than gas**
- **Lower cost of ownership over life of tool**

MX FUEL™ CARRY-ON™ Saves Users Time & Money



MX FUEL™ CARRY-ON™ POWER SUPPLY

Intermittent Applications v Continuous High Wattage

POWER MORE ON DEMAND

PORTABLE POWER ANYWHERE

MORE EFFICIENT POWER

Common Tools & Devices

Recommended Power Source

Intermittent Applications

- Require short burst of energy and run for short periods of time



Circular Saw
2-4 Seconds



Miter Saw
3-5 Seconds



Table Saw
10-15 Seconds



Pipe Threader
30 Seconds- 1 Minute



Small crews can rely on a more efficient power source

Continuous High Wattage Applications

- Require longer burst of energy and/or run for extended amounts of time



Welders
10 Minutes



Water Pumps
90 Minutes-
24/7 Runtime



Emergency Back Up Power Products
24/7 Runtime

- Appliances
- Sump Pumps
- Air Conditioners
- Furnaces



Gas solutions due to the runtime demands of products

Position the MX FUEL™ CARRY-ON™ to Intermittent Applications Users



MX FUEL™ CARRY-ON™ POWER SUPPLY

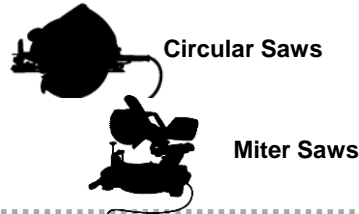
More Efficient Power

POWER MORE ON DEMAND

PORTABLE POWER ANYWHERE

MORE EFFICIENT POWER

Intermittent Use Applications



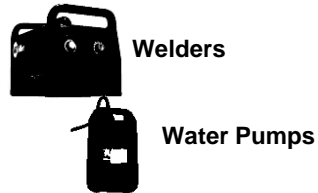
Circular Saws

Miter Saws



Preserves energy between applications

Continuous High Wattage Applications



Welders

Water Pumps



Limited runtime capabilities due to consistent draw

Safe to Use Indoors



Zero Emissions

Quiet Operation



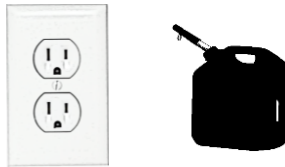
Noise Free Environment

Digital Tracking



Customize. Track. Manage.

Cost to Operate



~\$48/year

Cost to Recharge



Wastes a significant amount of fuel and gets costly



Able to sustain high wattage continuous applications for long periods of time



Must be placed outdoors due to emissions



Loud generators make it difficult to hear on site



Wasted time and money searching for equipment for job

~\$500/year

Cost to refuel & maintain gas generator

MX FUEL™ CARRY-ON™ is Designed for Intermittent Application Users



MX FUEL™ CARRY-ON™ POWER SUPPLY

Runtime

RUN-TIME WITH 2 XC BATTERIES



**1,210 CUTS
7-1/4" CIRCULAR SAW**



**270 CUTS
12" MITER SAW**



**55 3/4" THREADS
STATIONARY PIPE THREADER**



**40 HOT MEALS
1000W MICROWAVE**



**6 M18™ 5.0AH
RAPID CHARGER**



**1200 3" NAILS
AIR COMPRESSOR**



MX FUEL™ CARRY-ON™ POWER SUPPLY

Generator Frustrations

USER FRUSTRATIONS



STARTING
Multiple pulls to start generators



EMISSIONS
Unable to bring into indoor spaces or confined areas with minimal airflow



NOISE
Makes communication difficult with Users



WASTED FUEL & MAINTENANCE
Generators spend a significant amount of time in an idle state, wasting gas and putting unnecessary hours on the unit



LOCATING EQUIPMENT
Downtime locating equipment within a fleet



MILWAUKEE® SOLUTION



PUSH BUTTON ACTIVATION
Easy Start Up



SAFE FOR INDOOR USE
Zero Emissions



QUIET OPERATION
Minimal Disruption, Unit Stays In Proximity



SAVED COSTS
Cost of ownership & maintenance expenses are significantly decreased



PART OF THE ONE-KEY™ SYSTEM
Tracking, Security & Inventory Management

MX FUEL™ CARRY-ON™ Delivers an Emission Free, Quiet, and Efficient Solution



MX FUEL™ CARRY-ON™ POWER SUPPLY

Spider Box Frustrations

USER FRUSTRATIONS



EXTENSION CORDS

Significant Distance from User; Requires 100ft of extension cords and leads to voltage drop



SHARED POWER

Limited power source is often shared by users on site, causing issues amongst crews



CORD DAMAGE

AC Cords are left exposed onsite and risk being damaged by jobsite equipment



WASTED TIME

Users spend a significant amount of time searching for AC outlets on site and across several floors



THEFT

Users leave cordless batteries or personal electronics to charge a significant distance from their work, leading to theft and increased costs



MILWAUKEE® SOLUTION



LESS CORD MANAGEMENT

Users don't need to bring feet of extension cords to site since power moves with them



SELF RELIANT POWER

Users can bring power where they need and don't need to make concessions to AC availability on site



MINIMIZED CORD EXPOSURE

Due to less extension cords, users don't have to risk damage



INCREASED PRODUCTIVITY

User save time by being able to bring power with them throughout the sites



TOOLS & ELECTRONICS WITHIN LINE OF SITE

Due to less extension cords, users don't have to risk damage

MX FUEL™ CARRY-ON™ Allows Users to be Less Reliant on Shared Power



MX FUEL™ CARRY-ON™ 3600W/1800W POWER SUPPLY

**GROUND
FAULT
ISOLATED**

The MX FUEL™ CARRY-ON™ Power Supply meets the requirements for jobsite use



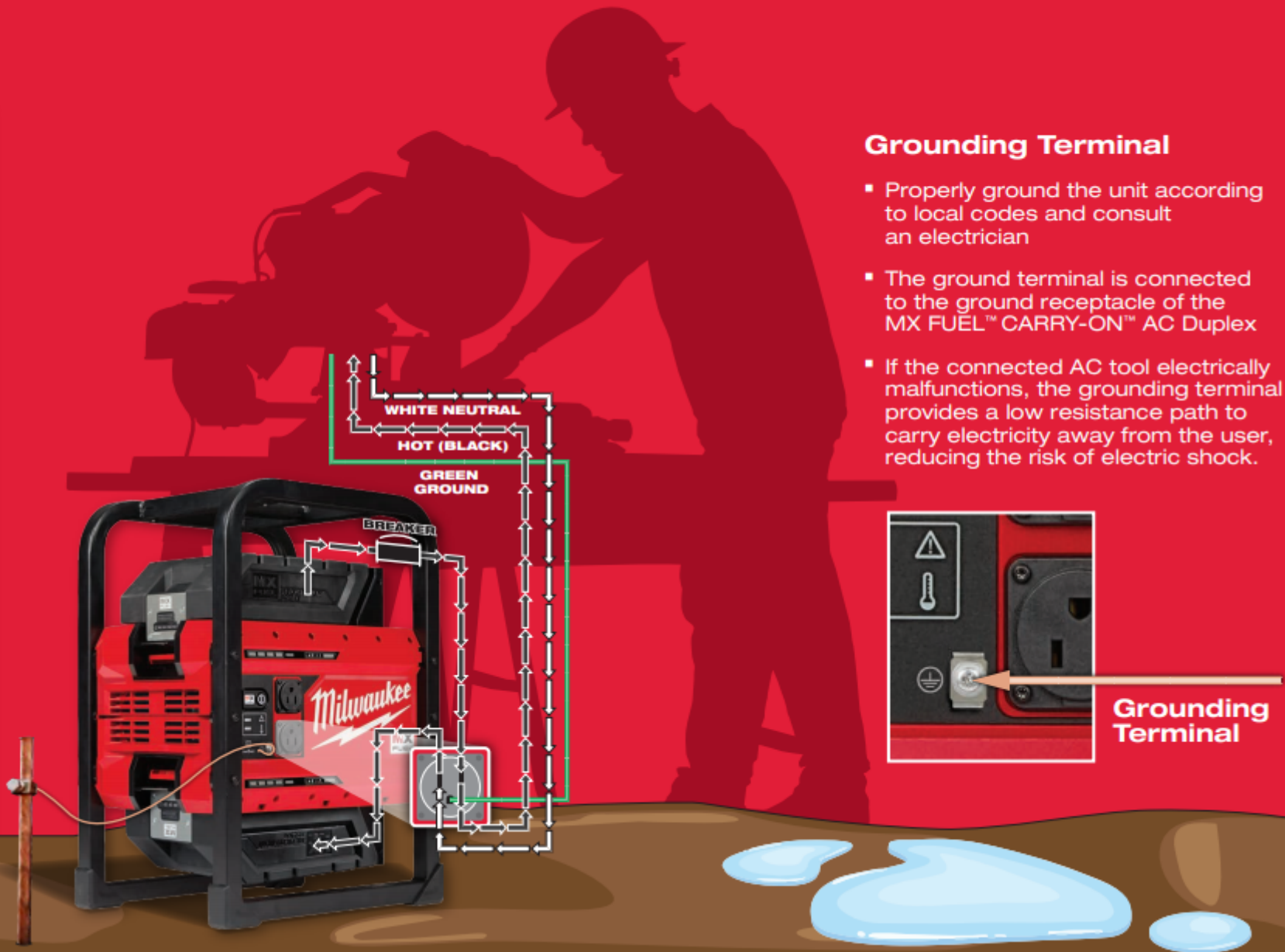
Does the MX FUEL™ CARRY-ON™ Power Supply require a GFCI?

The MX FUEL™ CARRY-ON™ Power Supply is provided with a 2 wire, single phase power system that is insulated from the frame and grounded surfaces. The nature of the design makes it ground fault isolated.

Why Doesn't the CARRY-ON™ Have GFCI Outlets?

GFCI outlets are designed to detect and trip if they sense current imbalances within an electrical system that is referenced to ground. These imbalances can occur when the "hot" side of the system is connected to ground, creating a ground fault. GFCI outlets on the CARRY-ON™ are not needed as it is designed to be Ground Fault Isolated.

Essentially, the electrical system for CARRY-ON™ is derived from a battery and is referenced to one of the battery poles and not ground. This means that if a user contacts one of the live legs of the output, there is no ground fault as the electricity wants to return to the battery and not flow to ground.



Grounding Terminal

- Properly ground the unit according to local codes and consult an electrician
- The ground terminal is connected to the ground receptacle of the MX FUEL™ CARRY-ON™ AC Duplex
- If the connected AC tool electrically malfunctions, the grounding terminal provides a low resistance path to carry electricity away from the user, reducing the risk of electric shock.

**Grounding
Terminal**



MX FUEL™ CARRY-ON™ POWER SUPPLY

ONE-KEY™



THE SMARTEST APPROACH TO EQUIPMENT MANAGEMENT

TRACK



**Greater Visibility
with Community
Tracking &
Alerts**



MANAGE



**Complete
Inventory
Management via
App or Desktop**



SECURE



**Industry Leading
Smart-Equipment
Technology**



[One-Key](#)



MX FUEL™ CARRY-ON™ POWER SUPPLY

Product Walk Around

ONE-KEY™ Tracking & Security

Track and manage inventory



Push Button Start

Convenient power control without the strain and frustration from a pull cord

Grounding Terminal

Able to ground unit

120V 15A Outlets

Power to run aggressive one 15A tool alongside a smaller device or charger

2nd MX FUEL™ Battery Bay

Choose between 1 or 2 battery operation to prioritize either weight or run-time

Rugged Metal Roll Cage

Jobsite durable

Integrated MX FUEL™ Battery Charger

Plug charging cord or extension cord directly into Power Supply to charge MX FUEL™ batteries



Charger Mounting Screws

Designated location on back to mount most M18 & M12 Chargers for easy carrying



Lockable Battery Bays

Prevent theft of batteries





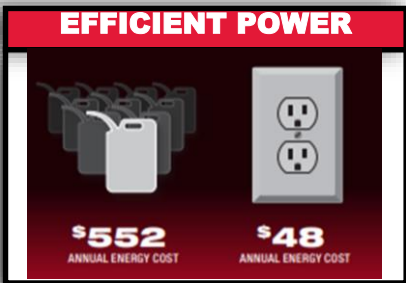
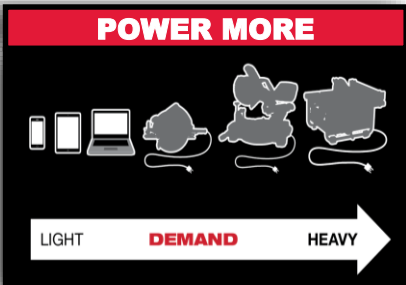
MX FUEL™ CARRY-ON™ POWER SUPPLY

One Slider

Pre-Order Date: 12.10.2020

Launch Ship Date: 2.1.2021

THE BEST TEMPORARY POWER FOR THE JOB



- **POWER MORE, ON DEMAND**
 - 3600 Peak Watts, 1800 Running Watts for Power Tools
 - Pure Sine Wave for Sensitive Electronics
 - Push Button Start: Start Working Faster
 - Ideal for 1-2 users

- **PORTABLE POWER, ANYWHERE**
 - No Emissions, Safe Use Indoors
 - Minimal Noise, Work Next to Your Power Supply
 - Optimized Footprint For Use In Any Workspace

- **MORE EFFICIENT POWER**
 - No Wasted Money From Idling
 - 1 or 2 Battery Operation for Double the Runtime

- **USER DEMANDED FEATURES**
 - M18/M12 Charger Mounting Location
 - One-Key Tracking & Security
 - Lockable Battery Bays



Kit Includes:

- MX FUEL™ CARRY-ON™ 3600W/1800W Power Supply
- (2) MX FUEL™ XC406 Batteries
- Charging Cord

| ITEM # | DESCRIPTION |
|------------|---|
| MXF002-2XC | MX FUEL™ CARRY-ON™ 3600W/1800W Power Supply |



Nothing but **HEAVY DUTY.**

APPENDIX



MX FUEL™ CARRY-ON™ POWER SUPPLY

Intermittent Applications v Continuous High Wattage

When positioning the MX FUEL™ CARRY-ON™, consider the types of applications the users wants to run

Intermittent Applications

- Require short burst of energy and run for short periods of time

Continuous High Wattage Applications

- Require longer burst of energy and/or run for extended amounts of time

Common Tools & Devices



Circular Saw
2-4 Seconds



Miter Saw
3-5 Seconds



Table Saw
10-15 Seconds



Pipe Threader
30 Seconds- 1 Minute



Welders
10 Minutes



Water Pumps
90 Minutes-
24/7 Runtime



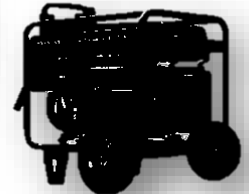
**Emergency Back Up
Power Products**
24/7 Runtime

- Appliances
- Sump Pumps
- Air Conditioners
- Furnaces

Recommended Power Source



Small crews can rely on a more efficient power source



Gas solutions due to the runtime demands of products



MX FUEL™ CARRY-ON™ POWER SUPPLY POSITIONING GUIDE

The Following Slides are Target User Guides

The trades are color-coded based on the likelihood that the amount of work outlined will meet that trade's needs for a *day*.

GREEN

YELLOW

RED

Highest Probability Of Adopting The Solution

Still needs to be positioned appropriately for where it might *not* fit their needs to set expectations

Medium Probability Of Adopting The Solution

Qualifying the user is critical. Likely to have objections because it will not meet *all* their application needs. Heavily leverage trial units.

Lower Probability Of Adopting The Solution

Best to approach this sale with caution. Will not meet many application needs but might have a unique or niche fit. Leverage trial units but be prepared to walk away from the sale if necessary.

**You may still face objections with “GREEN” trades and may still find success with “RED” trades. This is for general guidance prior to engaging users in order to better prepare for the conversation.*



MX FUEL™ CARRY-ON™ POWER SUPPLY

Positioning Guide



- Due to the nature of power supplies & AC Outlets, users can plug in variety of products to the unit
- All applications are from a crew of 1-2 Users and their experiences; if working with a larger crew- consider multiple power supply solutions and/or batteries
- For crews that are heavy corded users, consider the combination of applications they want to complete when positioning solutions

APPLICATION #1

Charging M18 5.0Ah Batteries



Electrical



Plumb/
Mech

Carpenter/
Remodeler

Framer

As Kitted: 6 M18 5.0Ah Batteries

+ Extra Battery: *Not Necessary for Crew 1-2*

- If working with a heavy cordless user or larger crew, consider additional batteries

APPLICATION #2

7 1/4" Circular Saw in 2x4



Carpenter



GC/
Concrete

Framer

As Kitted: 1210 Cuts into 2x4

+ Extra Battery:

- If cutting a mix of sheet goods and dimensional lumber for a larger crew, consider additional batteries

APPLICATION #3

3" Framing Nails Fired on Air Compressor



Carpenter/
Remodeler



Framer

As Kitted: 1200 3" Framing Nails

+ Extra Battery:

- If user is running multiple nailers off one compressor, consider an additional battery



MX FUEL™ CARRY-ON™ POWER SUPPLY

Positioning Guide



- Due to the nature of power supplies & AC Outlets, users can plug in variety of products to the unit
- All applications are from a crew of 1-2 Users and their experiences; if working with a larger crew- consider multiple power supply solutions and batteries
- For crews that are heavy corded users, consider the combination of applications they want to complete when positioning solutions

APPLICATION #4

Threading ¾" Black Pipe with Pipe Threader



<1" Capacity Pipe



As Kitted: 55 ¾" Cuts, Deburs, & Threads

- For crews threading smaller capacity (<1"), 2 batteries should suffice

>1" Capacity Pipe



+Extra Battery:

- Recommended for crews threading larger capacity threads

APPLICATION #5

Cuts into 2"x6" with 12" Miter Saw



As Kitted: 270 Cuts

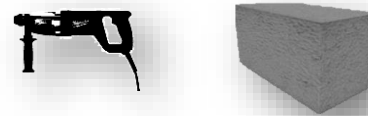
- For materials smaller than 2"x6", small crews should be able to get through applications on 2 Batteries

+ Extra Battery:

- Not Necessary for Small Crew

APPLICATION #6

½" x 2" Holes into Concrete with SDS Plus Rotary Hammer



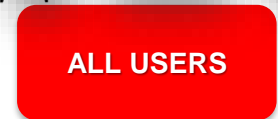
As Kitted: 250 Holes into Concrete

+ Extra Battery:

- Not Necessary for Smaller Crew
- Consider Varying Hole Sizes as that will influence runtime

APPLICATION #7

- High Draw, Continuous Power
- Emergency Back Up Power
- Running Multiple Appliances
- Water Pumps/HVAC Systems



NOT RECOMMENDED

- Do not encourage users to use the MX FUEL™ CARRY-ON™ as a back up power solution.
- Their power requirements will be too high and/or their runtime experience will be very poor.



MX FUEL™ CARRY-ON™ POWER SUPPLY

FAQs

- **How many 15A tools can I run at once on the CARRY-ON™?**
 - The CARRY-ON™ has (1) 120V 15A Duplex. It can successfully run a single 15A power tool and another low power product (ie. Phone charger, laptop, power tool charger).
- **Will running the CARRY-ON™ on one or two batteries affect performance at all?**
 - The MX FUEL™ CARRY-ON™ uses the battery ports sequentially, so it will discharge one battery, then automatically switch to the 2nd. This means that you will get full power with either one battery or two.
 - Note: Under a heavy load, if the first battery is in a low state of charge, the unit might require you to cycle on and off
- **Does the unit have passthrough power?**
 - No, the MX FUEL™ CARRY-ON™ does not have passthrough power functionality. Either the unit is charging the batteries when plugged in or is in a power output state.
- **What happens if a user pull too much power for too long?**
 - If a user has too many tools drawing power and either pulls more than 3600W or pulls peak power consistently for too long, the Overload Protection will kick in. A user will simply need to use the push button to power the unit off and back on again, and the unit will reset.
- **Why doesn't the MX FUEL™ CARRY-ON™ have GFCI outlets?**
 - GFCI outlets are designed to detect and trip if they sense current imbalances within an electrical system that is referenced to ground. These imbalances can occur when the "hot" side of the system is connected to ground, creating a ground fault. GFCI outlets on the CARRY-ON™ are not needed as it is designed to be Ground Fault Isolated. Essentially, the electrical system for CARRY-ON™ is derived from a battery and is referenced to one of the battery poles and not ground. This means that is a user contacts one of the live legs of the output, there is no ground fault as the electricity wants to return to the battery and not flow to ground. Reference Slide 23 for more information.
- **Can I plug a surge protector to plug multiple products into the CARRY-ON™?**
 - We recommend plugging a single product into each outlet for the best runtime experience. The more items you plug in, the shorter your runtime will be, and you will risk drawing too much power and overloading the unit
- **Does 2XC Batteries equal a tank of gas on a generator?**
 - No, 2XC Batteries do not equal a tank of gas on a generator. In our research, we found that generators would sit still for large portions of the day, being unused, and wasting fuel. The CARRY-ON™ does not "waste" energy, so users are able to be more efficient and save money. The CARRY-ON™ is intended for intermittent application users.
 - For users who are consistently drawing power from the unit and has all day runtime needs, they will likely need to invest in multiple batteries or look at the CARRY-ON™ as an incremental solution for lighter days.
- **What type of screws are required for the charger mounting location on the side of the tool? What chargers are compatible with the unit?**
 - The unit comes with two M4 screws to attach the chargers to the body of the CARRY-ON™.
 - Accommodated Chargers: 48-59-1812, 48-59-1808, 48-59-1811, 48-59-1802
- **Can I use the MX FUEL™ CARRY-ON™ for emergency backup power?**
 - It is not recommended to use the MX FUEL™ CARRY-ON™ Unit for emergency backup power. The power needed for backup power is substantially more (7,000W+) than what the MX FUEL™ CARRY-ON™ provides. Additionally, the runtime needs for emergency backup power would require several batteries to get through the day.
- **I have a lower power product plugged into the CARRY-ON™ and automatically shutdowns after 1 hour. Why?**
 - When using an item that draws low power, the CARRY-ON™ cannot sense anything under 80W power consumption. The unit will stay on for 1 hour and than will automatically shutdown to preserve power.
- **How fast will the CARRY-ON™ charge an MX FUEL™ Battery?**
 - The CARRY-ON™ will charge at the same rate as the MX FUEL™ Charger. It will charge the bays sequentially, starting with the 1st packing inserted.
 - MX FUEL™ CP203 Battery- 45 Minutes
 - MX FUEL™ XC406 Battery- 90 Minutes
- **Is the CARRY-ON™ Compatible with PACKOUT™?**
 - The CARRY-ON™ does not have traditional PACKOUT™ Compatibility via its feet. However, users can maneuver the unit throughout the jobsite on the 48-22-8488 PACKOUT™ Customizable Work Top.